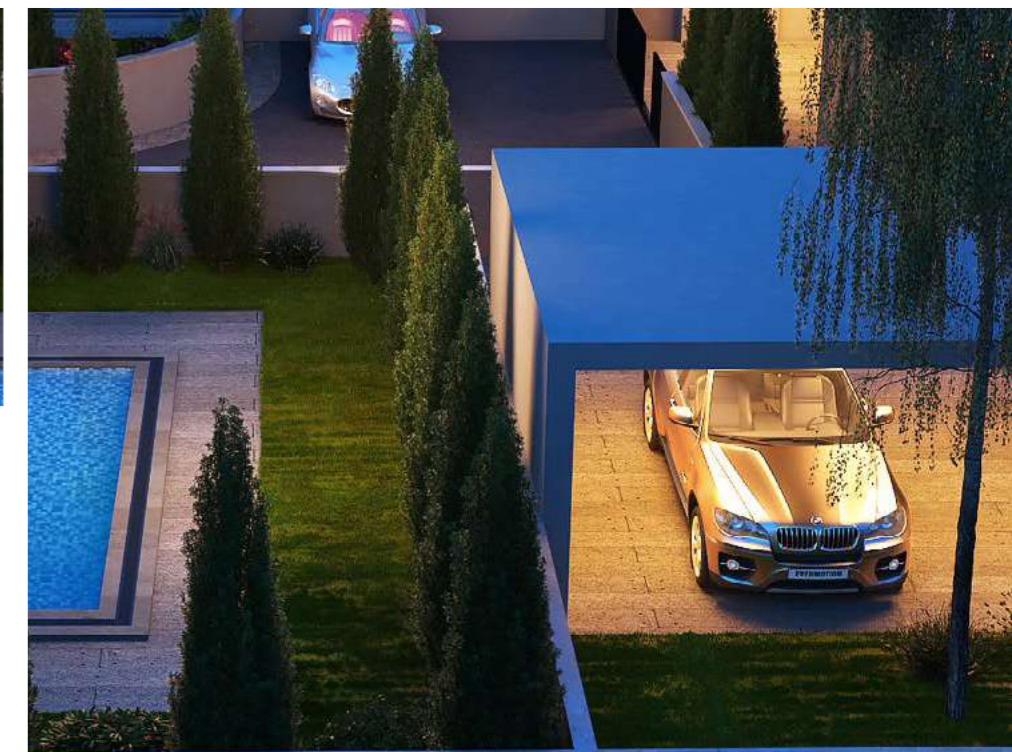
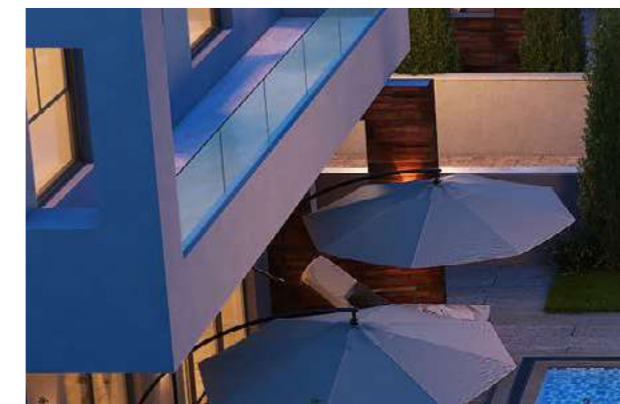




Disclaimer:

The photographic and artistic impressions contained in this brochure are for illustrative purposes only and the final product may differ from illustration. The sole purpose of the information presented here is for reference only and in no way could it be considered contractually binding. The Vendor reserves the right for any changes at the Vendor's sole discretion.



Michali Vrachimi 4, Xylofagou 7520, Larnaca - Cyprus, 7520 P.O.Box 47185  
T: +357 24815850 | F: +357 24725144  
E: info@cysense.eu | www.cysense.eu

**ZEN** *Homes* 3



## THE LOCATION

**ZEN HOMES** is the ideal location for those who are looking to enjoy the relaxing and peaceful life in Cyprus. The combination of living in the picturesque villages of the South East of Cyprus with the modern design of ZEN HOMES is unique! Being next to the most popular tourist destination of the island and also enjoying calm & quiet is an amazing feeling!

## Kallonis Lesvou, Frenaros 5350



### NEAR BY AMENITIES

- Supermarket 500m
- Traditional Restaurant 400m
- Pharmacy 450m
- Private Hospital 6.2km
- Private English school 7.1km
- Ayia Thekla Beach 9.1km
- Ayia Napa 16km
- Larnaca Airport 54.9km





### ZEN HOMES 3

These luxurious modern design villas will consist of large spacious areas, ideal either for a holiday or a permanent home. On the ground floor there will be an open plan living, dining, kitchen area and a guest toilet. On the first floor there will be 3 good size bedrooms, of which the master bedroom will have en-suite facilities and a main bath.



### FEATURES

- ▶ Newly built
- ▶ Energy efficiency category A
- ▶ High quality finishes
- ▶ Walking distance to amenities
- ▶ Granite kitchen worktops
- ▶ Fitted kitchen & fitted wardrobes
- ▶ Quality sanitary wear and mixers
- ▶ Ceramic flooring
- ▶ En-suite facilities
- ▶ Thermal insulation aluminums on all windows and patio doors
- ▶ Double glazed low energy glass windows in all areas
- ▶ Pressurized water system
- ▶ Solar water heating system
- ▶ Full Photovoltaic Solar Panels system
- ▶ Thermal insulation system
- ▶ Provision for air conditioning
- ▶ Provision for alarm system



#### **Villa Type A1**

Internal Area 120.90 m<sup>2</sup>  
Covered Verandas 20.00 m<sup>2</sup>  
Covered Parking 19.50 m<sup>2</sup>  
Total Covered Area 160.40 m<sup>2</sup>  
Plot size 326 m<sup>2</sup>  
3 Bedrooms  
3 toilets



#### **Villa Type B1**

Internal Area 122.90 m<sup>2</sup>  
Covered Verandas 7.90 m<sup>2</sup>  
Covered Parking 20.23 m<sup>2</sup>  
Total Covered Area 151.03 m<sup>2</sup>  
Plot size 352 m<sup>2</sup>  
Pool 6x3 m  
3 Bedrooms  
3 toilets



#### **Villa Type C2**

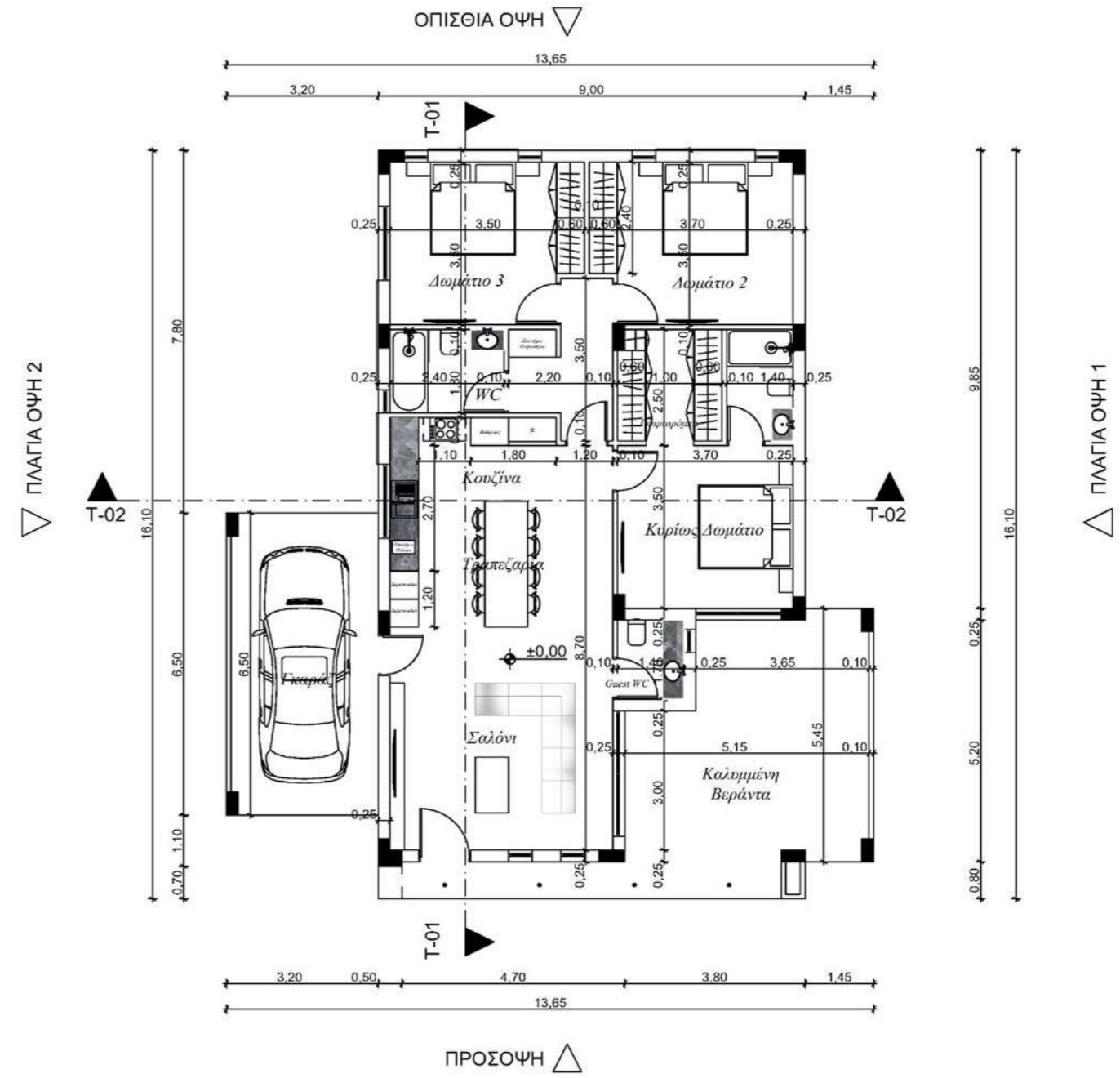
Internal Area 138.40 m<sup>2</sup>  
Covered Verandas 14.10 m<sup>2</sup>  
Covered Parking 20.80 m<sup>2</sup>  
Total Covered Area 173.30 m<sup>2</sup>  
Plot size 301 m<sup>2</sup>  
Pool 7x3 m  
3 Bedrooms  
3 toilets



#### **Villa Type D**

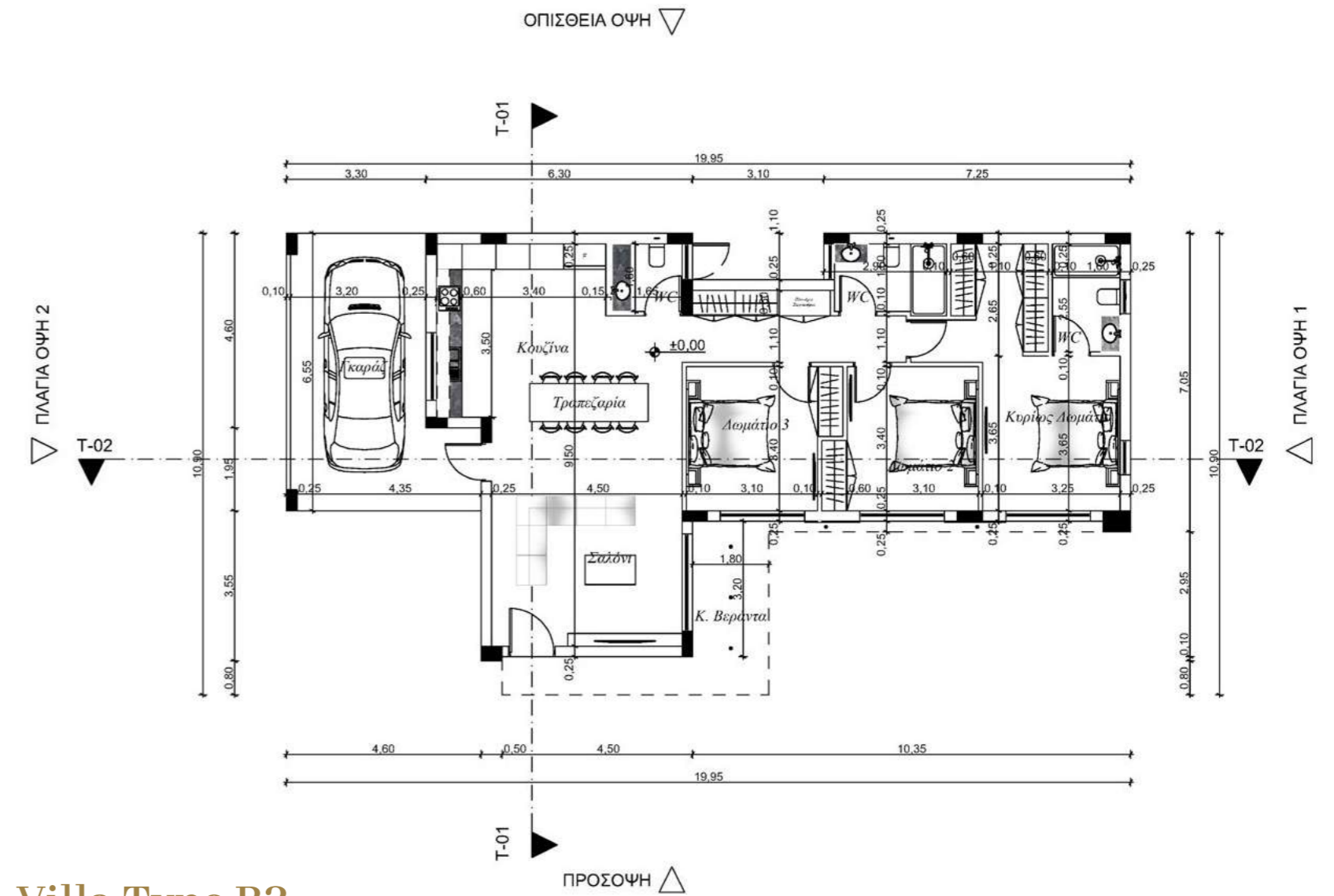
Internal Area 146.30 m<sup>2</sup>  
Covered Verandas 14.60 m<sup>2</sup>  
Covered Parking 25.00 m<sup>2</sup>  
Total Covered Area 185.90 m<sup>2</sup>  
Plot size 265 m<sup>2</sup>  
3 Bedrooms  
3 toilets





**Villa Type A2**

Internal Area 120.90 m<sup>2</sup>  
 Covered Verandas 20 m<sup>2</sup>  
 Covered Parking 19.80 m<sup>2</sup>  
 Total Covered Area 160.70 m<sup>2</sup>  
 Plot size 361 m<sup>2</sup>  
 3 Bedrooms  
 3 Toilets



## Villa Type B2

Internal Area 122.90 m<sup>2</sup>  
 Covered Verandas 9.50 m<sup>2</sup>  
 Covered Parking 20.96 m<sup>2</sup>

Total Covered Area 153.36 m<sup>2</sup>  
 Plot size 329 m<sup>2</sup>  
 Optional Pool 6x3 m

3 Bedrooms  
 3 Toilets



## Villa Type C1

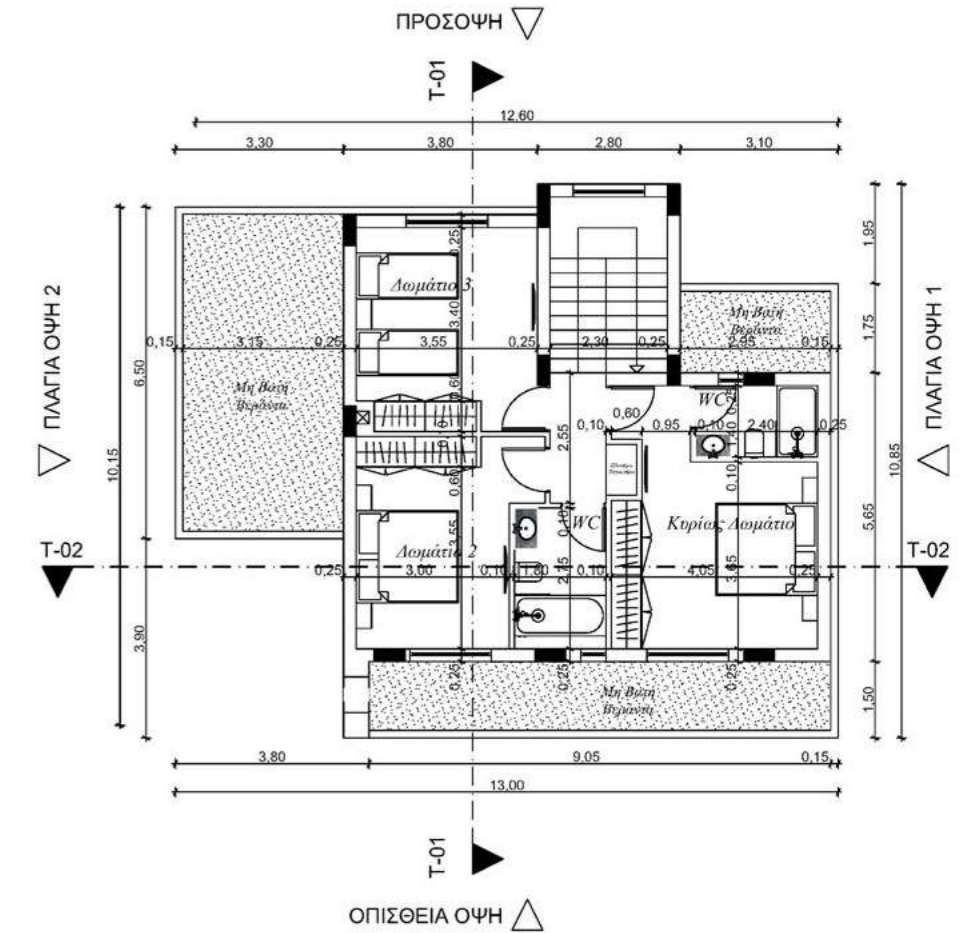
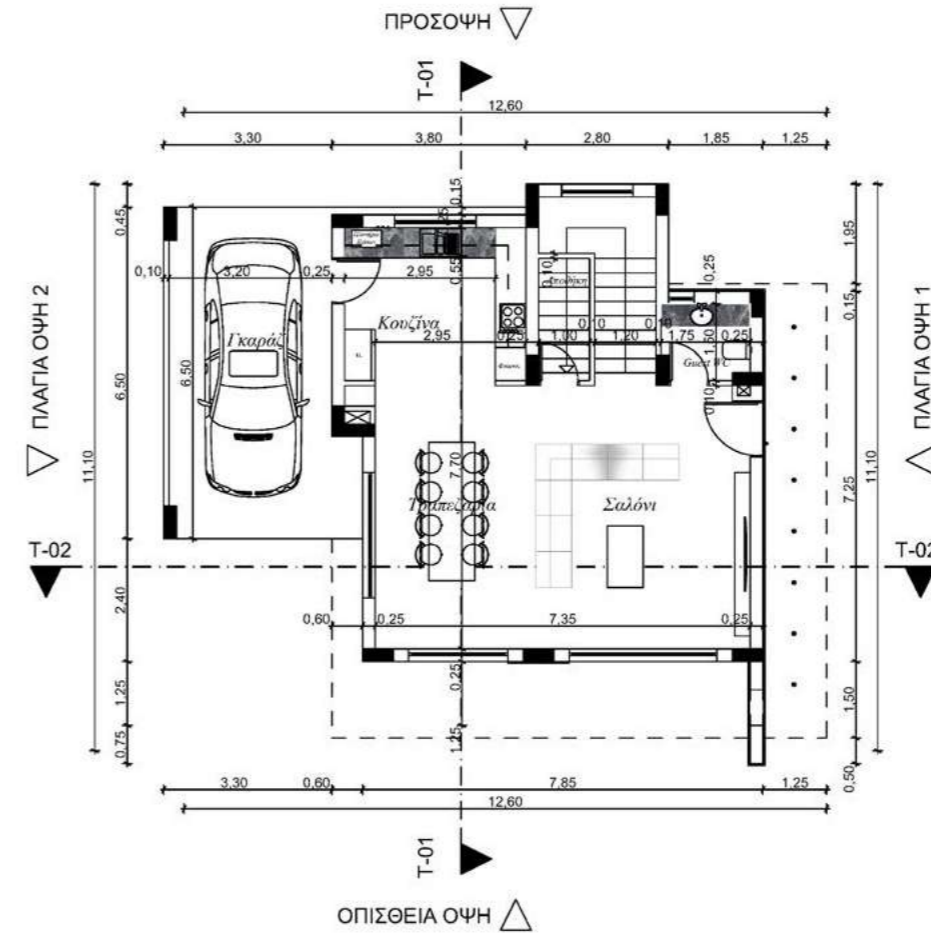
Internal Area 138.40 m<sup>2</sup>  
 Covered Verandas 14.10 m<sup>2</sup>  
 Covered Parking 20.80 m<sup>2</sup>  
 Total Covered Area 173.30 m<sup>2</sup>

Plot size 301 m<sup>2</sup>  
 3 Bedrooms  
 3 Toilets

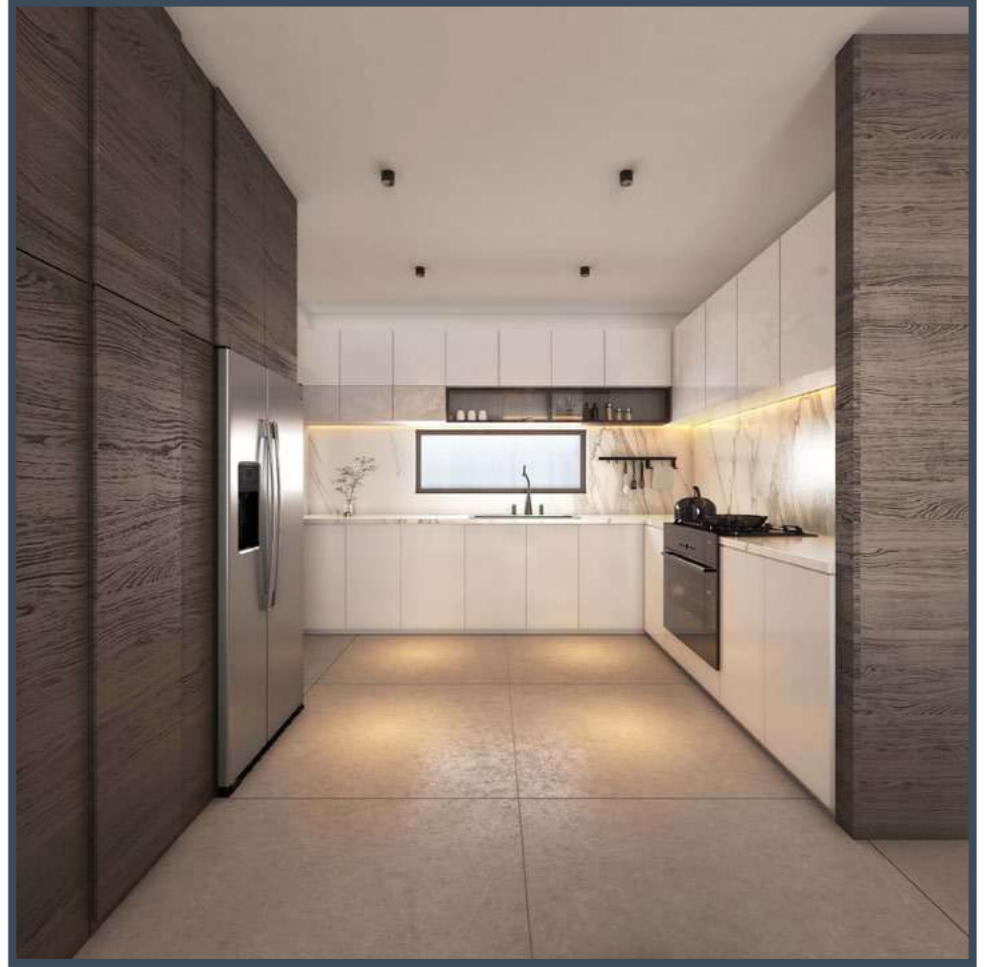
## Villa Type C3

Internal Area 138.40 m<sup>2</sup>  
 Covered Verandas 14.10 m<sup>2</sup>  
 Covered Parking 20.80 m<sup>2</sup>  
 Total Covered Area 173.30 m<sup>2</sup>

Plot size 315 m<sup>2</sup>  
 Optional Pool 7X3 m  
 3 Bedrooms  
 3 Toilets









**HIGH QUALITY**  
finishes are used  
throughout each  
house with a range  
of choices to be  
made for kitchen,  
living room and  
bedrooms.

